

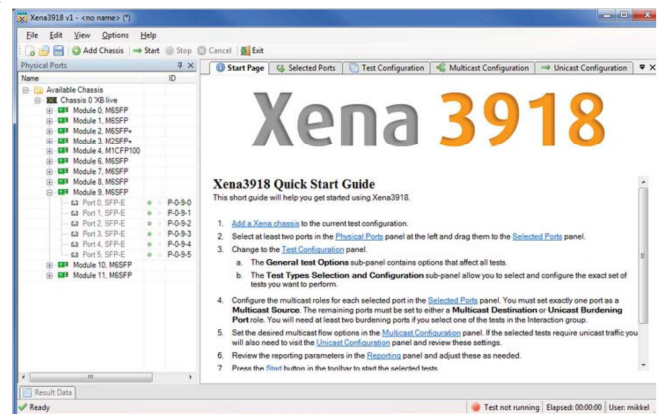
## Introducing the new Xena3918 Advanced IP Multicast Testing

RFC3918 describes tests for measuring and reporting the throughput, forwarding, latency and Internet Group Management Protocol (IGMP) group membership characteristics of devices that support IP multicast protocols.

Xena3918 is a free PC application developed by Xena Networks to help you perform RFC3918 testing using one or more Xena test chassis. It is automatically installed together with XenaManager, the GUI for operating Xena's hardware.

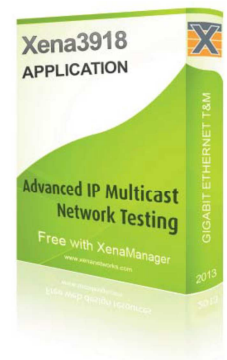
Xena3918 provides an easy-to-use port configuration panel that lets you add and remove ports, and assign IP addresses and port roles. Ports from multiple XenaBay and XenaCompact chassis can be freely mixed. The tests can be performed using various framesizes, either as in-test variations or as multiple test runs each using a fixed frame size.

The multicast traffic can be configured to use the exact protocol headers needed. All fields in the protocol headers can be modified. The unicast traffic for mixed class and burdening tests can be specified separately in a similar fashion.



### Top Features – Xena3918

- Makes it easy to create, edit and execute all test-types specified in RFC 3918
- Support for IPv4 (and soon IPv6)
- Support for all IGMP/MLD versions
- Works seamlessly with multiple XenaBay and Comprehensive options enhance value XenaCompact test chassis
- Ability to flexibly define protocol layers supported by the test incl. Ethernet, Customer and Service VLANs, IP and UDP
- Extensive configuration options for fine-tuning tests



## Comprehensive options enhance value

Each test type includes a set of options. These are described below\*:

**Duration:** The duration in seconds of the time used in each trial for the actual measurement. (This does not include the test setup and teardown phases so the total duration of a test will be longer.)

**Iterations:** The number of times a test is repeated using the same set of variable parameters (packet size, rate, etc.)

**Multicast Group Count:** Lets you define a multicast group count sweep with a start, end and step value.

**Multicast Group Count Selection:** Lets you specify a series of multicast group counts which can be used if multiple iterations have been configured.

**Initial Rate:** The initial rate in percent of the overall rate configured in the Multicast Stream panel.

**Maximum Rate:** The maximum percent of the overall rate configured in the Multicast Stream panel.

**Minimum Rate:** The minimum rate in percent of the overall rate configured in the Multicast Stream panel.

**Step Rate:** Used to increment the rate percentage when iterating from a starting to a maximum rate.

**Resolution:** A minimum difference between rates which will be used to stop the iteration.

**Unicast Traffic Ratio:** The percentage of the overall rate configured in the Multicast Stream panel to be used for unicast traffic. (The unicast rate will be added to the configured multicast rate. So if the multicast rate has been set to e.g. 10% and the UC traffic ratio is set to 50% the total rate for the port will be  $10\% + (50\% \text{ of } 10\%) = 15\%$ .)

\* Not all options apply to every test type.

More information on <http://www.tucana.com/products/product/>

## About Tucana Telecom

We believe that our success and competitive advantages lies in providing our customers with a combination of telecom know-how, price efficient products, and fast access to expert support. Our products and services are all built on a solid platform of signalling and data protocol know-how. This platform is continuously strengthened through our tight hands on interrelations with our largest customers.

It is our ambition to contribute to increased revenues and reduced costs for our customers by providing them with powerful operations and business support systems. If you would like to know more about the company, do not hesitate to contact us!

More information on [www.tucana.com](http://www.tucana.com)

More information:

Ramon Mutsaers

Tel: +31 76 5794 115

[ramon.mutsaers@tucana.com](mailto:ramon.mutsaers@tucana.com)



Tucana is a value-added distributor of Test- and Measurement-solutions and related applications/services for telecom- and IT-networks. The T&M solutions are used for quality & performance testing, advanced protocol diagnostics, security, network management and monitoring in converged communications networks. Our primary focus are the service providers, fixed and mobile operators, broadcasting companies, OEM's and Enterprises.. The company has offices in Belgium, France, Germany and The Netherlands.

**Belgium** – Tucana Telecom NV – Miraeusstraat 10 – B2018 Antwerp – Tel: +32 3 237 6326 - Fax +32 3 216 1587

**France** – Tucana Telecom SAs – 129/137 Boulevard Carnot – 78110 Le Vésinet – Tel: +33 1 3009 2090 - Fax +33 1 3009 1061

**Germany** – Tucana Telecom GmbH – c/o Keller-Menz Rindermarkt 3+4 – D80331 Munich – Tel: +49 89 540 30 969 - Fax +49 89 540 30 959

**The Netherlands** – Tucana Telecom BV – Minervum 7446K – 4817 ZG Breda – Tel: +31 76 5794111 - Fax +31 76 5811619

[info@tucana.com](mailto:info@tucana.com)

[www.tucana.com](http://www.tucana.com)